

JOHNSON

| | |
|------------------|--------------|
| Uniclass L512 | Epic E223 |
| CI/SfB (42) | Sg3 |
| December 2008 | |

kitchen & bathroom

DECORATIVE CERAMIC WALL & FLOOR TILES

JOHNSON

kitchen & bathroom index

| | | |
|-----------|----|--|
| | 04 | introduction |
| TILES | 08 | 100 x 100mm |
| | 10 | 150 x 150mm |
| | 16 | 200 x 200mm |
| | 18 | 300 x 200mm |
| | 24 | prismatics |
| | 28 | kerastar |
| TECHNICAL | 30 | technical <i>colour notation</i> <i>specification charts</i> <i>adhesives & grouts</i> <i>installation & cleaning</i> <i>dda guidance</i> |

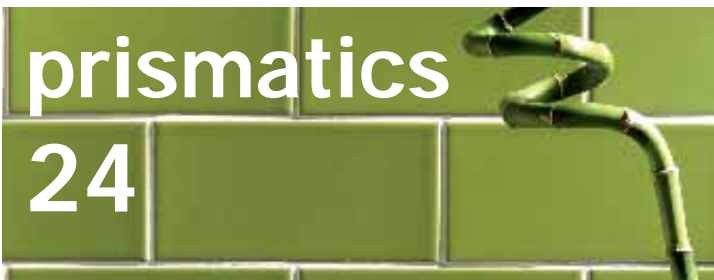
small format
08



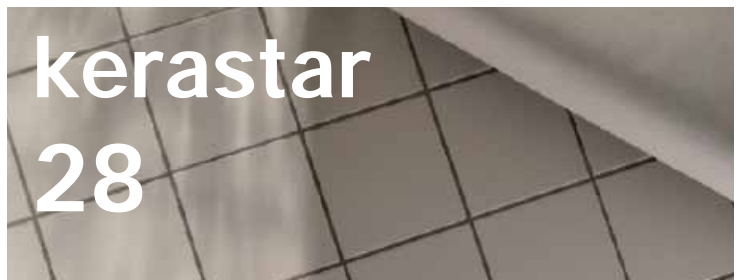
medium format
16



prismatics
24



kerastar
28



technical
30



introduction

company credentials

Founded in 1901 Johnson Tiles (formally H & R Johnson Tiles Ltd) is the leading manufacturer and supplier of ceramic tiles in the UK, with a long history of market leadership and industry production development.

Part of the Norcros Group we have sister manufacturing bases in South Africa and Greece with additional offices in Dubai, USA and Australia.

In 2001 an investment in excess of £35 million allowed us to develop a new fully automated production facility on a single integrated site in Stoke-on-Trent. Our UK factory produces over 5 million square metres of ceramic tiles for use in the UK and overseas markets.

Johnson Tiles products are used in a wide range of commercial and non commercial projects and we supply ceramic tiles to almost every country of the world.

Our strength is based on a comprehensive portfolio of leading edge quality products combined with very high levels of customer service. As manufacturers we have extremely stringent quality and environmental control standards.

In 2006 we created and opened the award winning Material Lab design resource centre at 10 Great Titchfield Street, London, offering designers and architects an environment where products such as ceramics, glass, wallpaper, carpet tiles, eco-resins, fabrics and many more materials can be explored.

We have a longstanding commitment to environmental management and have had a formal environmental policy since 1992. Our environmental management system is certified against the ISO14001 standard.

We were the first ceramics company within the whitewares sector to gain certification against the ISO14001 standard in 1998 and have since successfully upgraded our certification to meet the latest requirements of ISO14001:2004. We are the only UK wall tile manufacturer to have ISO14001 accreditation.

The company has never been subject to any prosecutions or formal environmental regulatory action for any breaches of environmental legislation.

In 1997 Johnson Tiles were awarded The Queen's Award for Environmental Achievement for our ceramic waste recycling scheme.

To our knowledge we are the only manufacturer in the world to operate such a scheme. This scheme which has been in continuous use since 1992 also enabled Johnson Tiles to win the Manufacturing Industry Achievement Award for Environmentalist of the Year in 1997.

In 2008 Johnson Tiles was the only ceramics manufacturer or supplier to appear in The Sunday Times Top 50 Best Green Companies Awards.

Approximately 25% of the material used to produce our wall tiles comes from recycled ceramic materials from our own and other local companies.

Various recycling and energy saving schemes throughout our production and office processes allow us each year to:-

Save 20,000 tonnes of ceramic landfill from our own and local ceramic factory waste saving 360 tonnes of CO₂ in transportation on materials

Save 1250 tonnes of virgin timber

Use 92% recycled materials in our packaging

Re-use 32 million litres of water (30% of the total factory usage)

Save 42 million kWh of energy

Save 2400 tonnes of CO₂

Our energy and material savings are detailed in our "Ceramic Tile Environmental Strategy" document.

Johnson Tiles are the largest supplier of ceramic tiles for affordable homes, helping to achieve and exceed the Decent Homes standard in communities throughout the UK.



Recycling - responsible manufacturing



Material Lab - London

THE SUNDAY TIMES



BEST GREEN
COMPANIES
2008





PRS54 Papaya Satin 100 x 100mm



kitchen & bathroom tiles

Products identified in this brochure are those regularly used within the Affordable Housing Sector. Ceramic tiles in this brochure form a small part of our standard portfolio of ceramics. For more information on our full range of ceramic tiles please contact your sales manager.

Product information (see example below) is provided to assist in the specification and suitability of products. These recommendations are generic only, please contact our technical advisory service for specific guidance on fitness for purpose applications Tel: 0845 210 3000.

SPECIFICATION

| Wall | Floor | Other | Material | Finish |
|----------|-------|-------|----------------|--------|
| Internal | - | - | Glazed Ceramic | Satin |

kitchen & bathroom

100 x 100mm

152 x 152mm

AVAILABILITY



100 x 100 x 6.5mm

PAYS1A Cream
RUST1A Rustic White



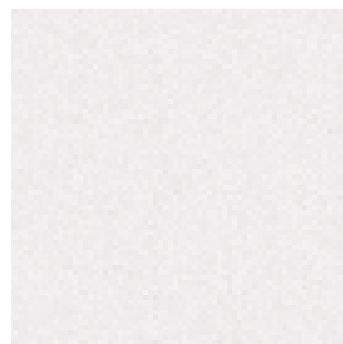
Opal White

152 x 152 x 5.5mm

152 x 152 x 5.5mm Round Edge (RE)

152 x 152 x 5.5mm Double Round Edge (REX)

OPAL WHITE



Opal White Gloss

PAYSANNE



PAYS1A Cream Gloss

RUSTIC WHITE



RUST1A Rustic White Gloss

SPECIFICATION

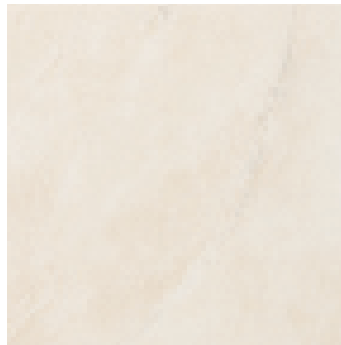
| Wall | Floor | Other | Material | Finish |
|----------|-------|-------|----------------|--------|
| Internal | - | - | Glazed Ceramic | Gloss |

small
format



small
format

INTAGLIO



INT1A Beige Gloss



INT4A Aqua Gloss



INT1B Beige Gloss



INT4B Aqua Gloss



INT1D Beige Gloss



INT4D Aqua Gloss

DUNE



DUNE2A Natural Satin

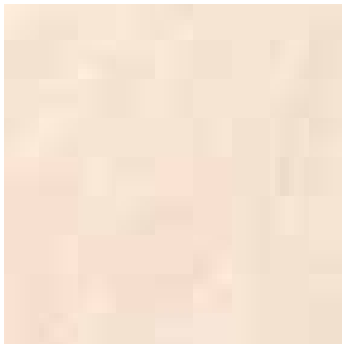


DUNE1A White Satin

INTA4A Intaglio Aqua 150 x 150mm
INTA4B Intaglio Aqua 150 x 150mm
INTA4D Intaglio Aqua 150 x 150mm

kitchen & bathroom

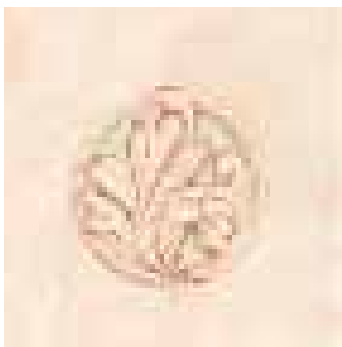
150 x 150mm



INT6A Peach Gloss



INT6B Peach Gloss



INT6D Peach Gloss

DUNE



DUNE6A Slate Green Satin



DUNE5A Terracotta Satin



DUNE4A Grey Satin

AVAILABILITY



150 x 150 x 6.5mm

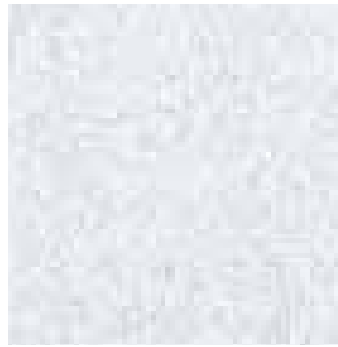
SPECIFICATION

| Wall | Floor | Other | Material | Finish |
|----------|-------|-------|----------------|---------|
| Internal | - | - | Glazed Ceramic | Various |

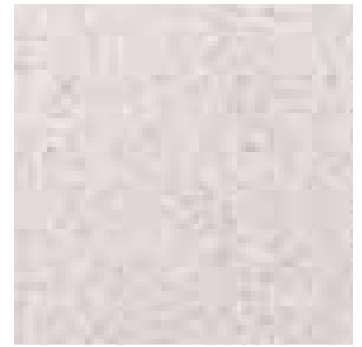
kitchen & bathroom

150 x 150mm

MICROS



PRM57 White/Shark Gloss

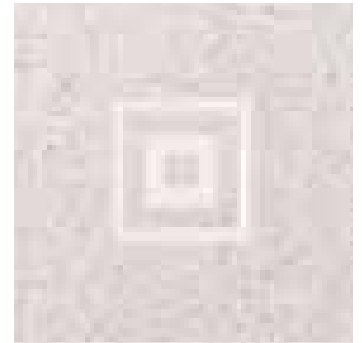


PRM59 Rice/Storm Grey Gloss

GEO

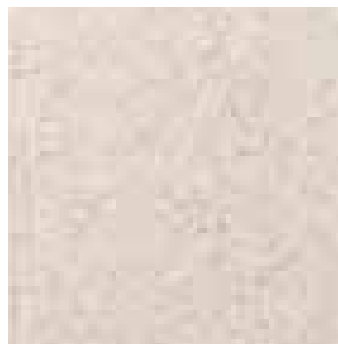


GEO57 White/Shark Gloss

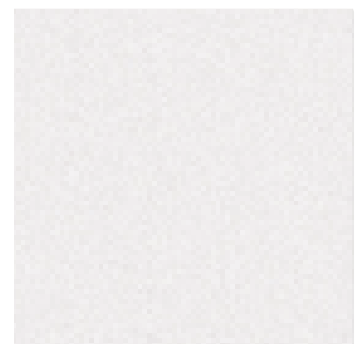


GEO59 Rice/Storm Grey Gloss

MICROS



PRM64 Magnolia/Cappuccino Gloss



PRG1 White Gloss

GEO



GEO64 Magnolia/Cappuccino Gloss



GEO1B White Gloss

AVAILABILITY

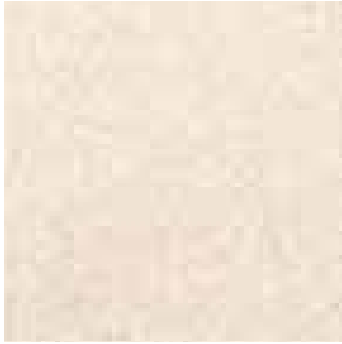


150 x 150 x 6.5mm

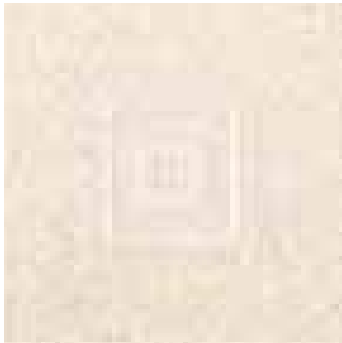
SPECIFICATION

| Wall | Floor | Other | Material | Finish |
|----------|-------|-------|----------------|--------|
| Internal | - | - | Glazed Ceramic | Gloss |

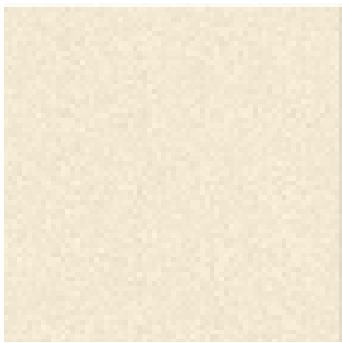
small
format



PRM60 Magnolia/Redwood Gloss



GEO60 Magnolia/Redwood Gloss



PRV2 Victoria Cream Gloss



GEO2B Victorian Cream Gloss



PRG1 White / GEO1B White 150 x 150mm

small
format

CITY SANDSTONE



CTSA6A Beige Satin



CTSA4A White Satin



CTSA5A Cream Satin

MONYASH



MASH1A Natural Satin

EDALE



EDAL1A Natural Gloss



MASH1B Natural Satin



EDAL1B Natural Gloss

PAPYRUS



PAPH1A Beige Satin



PAPH5A Grey Satin

kitchen & bathroom

150 x 150mm

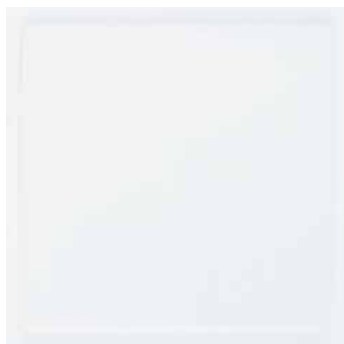


CTMA3A White / Grey Satin



CTMA4A White / Beige Satin

RUSTIC WHITE



RUST1A Rustic White Gloss

PAYSANNE



PAYS1A Cream Gloss

MARBLE



MBL1A Natural Gloss

GRANITE



GRN1A Black Gloss

AVAILABILITY



150 x 150 x 6.5mm

SPECIFICATION

| Wall | Floor | Other | Material | Finish |
|----------|-------|-------|----------------|---------|
| Internal | - | - | Glazed Ceramic | Various |

kitchen & bathroom

200 x 200mm

DIME

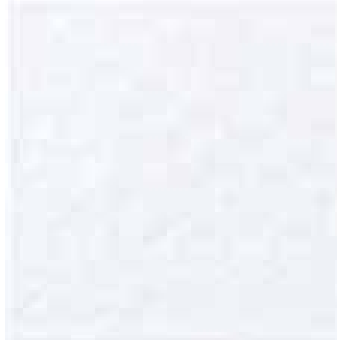


DIM13B Black Satin



DIM13C Black Satin

ALPINE WHITE



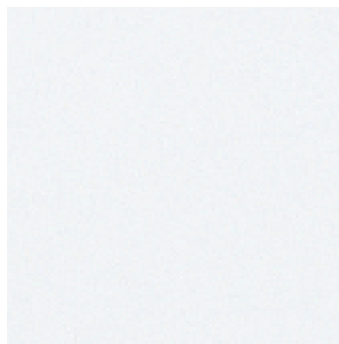
ALPN1A Alpine White Gloss

KALAHARI CREAM

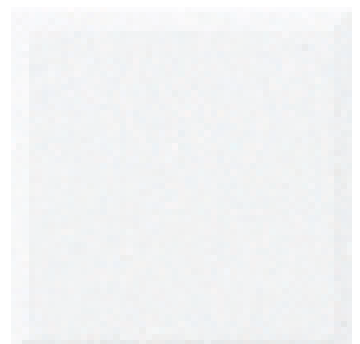


KAL1A Cream Gloss

POLAR WHITE

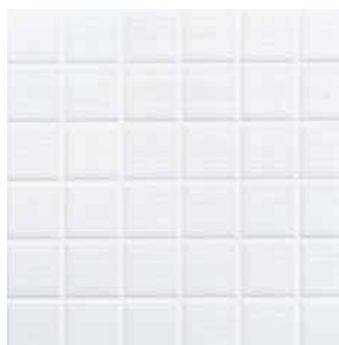


PW1 Polar White Gloss



PW1B Polar White Gloss

URBAN

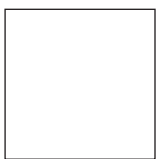


URB12A White Satin



URB1A White Gloss

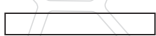
AVAILABILITY



200 x 200 x 6.5mm



200 x 50 x 6.5mm



200 x 30 x 6.5mm

ALPN1A Alpine White
KAL1A Cream
PW1 Polar White
PW1B Polar White
URB12A White Satin
URB1A White

DIM13B Black Satin

DIM13C Black Satin

SPECIFICATION

| Wall | Floor | Other | Material | Finish |
|----------|-------|-------|----------------|---------|
| Internal | - | - | Glazed Ceramic | Various |

medium
format



URB1A White
DIM13B Dime

medium
format



kitchen & bathroom

300 x 200mm

CITY SANDSTONE



CTSA1A White Satin

CITY MARBLESTONE



CTSA2A Cream Satin



CTMA1A White / Grey Satin

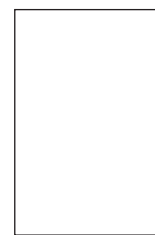


CTSA3A Beige Satin



CTMA2A White / Beige Satin

AVAILABILITY



300 x 200 x 7mm



300 x 300 x 10mm

ASSOCIATED FLOOR TILES

300 x 300mm

City Marblestone

CTMA1F White / Grey

CTMA2F White / Beige

City Sandstone

CTSA1F White

CTSA2F Cream

CTSA3F Beige

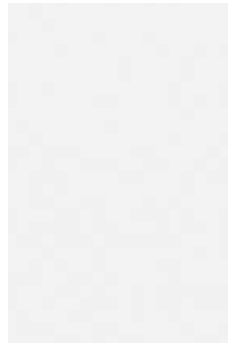
SPECIFICATION

| Wall | Floor | Other | Material | Finish |
|----------|-------|-------|----------------|--------|
| Internal | - | - | Glazed Ceramic | Satin |

kitchen & bathroom

300 x 200mm

PURE WHITE

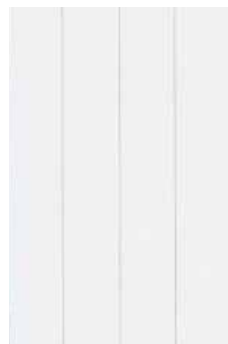


PURE1A Pure White Gloss

ALPINE WHITE



ALPN1A Alpine White Gloss



PURE1E Pure White Gloss

MATLOCK



MLOCKA Beige Gloss



PURE1F Pure White Gloss



MLOCKB Beige Gloss

AVAILABILITY



300 x 200 x 7 mm

SPECIFICATION

| Wall | Floor | Other | Material | Finish |
|----------|-------|-------|----------------|---------|
| Internal | - | - | Glazed Ceramic | Various |

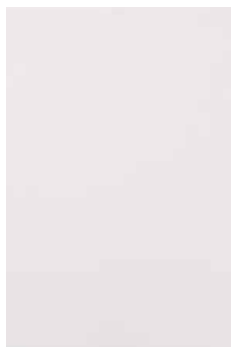
medium
format

BUXTON



BXTONA Natural Satin

CLASSIQUE



CLAS1A White Satin



BXTONB Natural Satin



CLAS1B White Satin



CLAS1B White Satin

medium format

HORIZON



HORI01 Cream Gloss



HORI02 Blue Gloss



HORI03 Pink Gloss

ECLIPSE



ECL01B Cream Gloss



ECL02B Blue Gloss



ECL03B Pink Gloss



ECL01D Cream Gloss



ECL02D Blue Gloss



ECL03D Pink Gloss

kitchen & bathroom

300 x 200mm

SPARTA



SPA01B Cream Gloss



SPA01D Cream Gloss



SPA02B Blue Gloss



SPA02D Blue Gloss

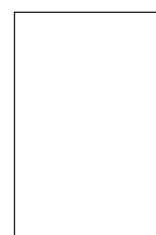


SPA03B Pink Gloss



SPA03D Pink Gloss

AVAILABILITY



300 x 200 x 7 mm

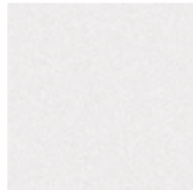
SPECIFICATION

| Wall | Floor | Other | Material | Finish |
|----------|-------|-------|----------------|--------|
| Internal | - | - | Glazed Ceramic | Gloss |

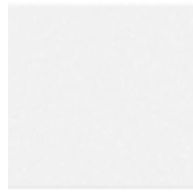
kitchen & bathroom

prismatics

price group 1

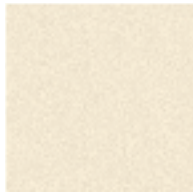


PRG1 White



PRS12 White Satin

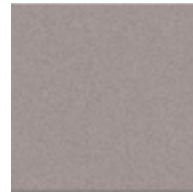
price group 2



PRV2 Victorian Cream



PRG7 Hawk Grey



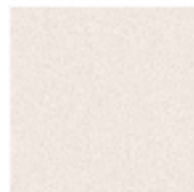
PRG9 Woodpigeon



PRG10 Barley



PRG21 Sugarcane



PRG23 Rice



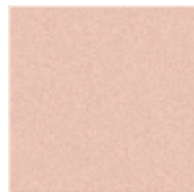
PRG24 Storm Grey



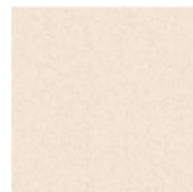
PRG25 Thistle



PRG33 Bluebell



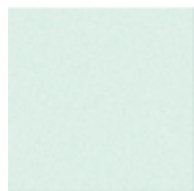
PRG34 Shell Pink



PRG36 Peach Sorbet



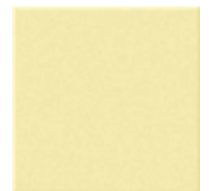
PRG37 Peach Melba



PRG45 Mintwater



PRS47 Thistledown Satin



PRS49 Mimosa Satin



PRS 73 Willow Satin



PRS74 Almond Satin



PRS75 Buttermilk Satin



PRM57 White / Shark



PRM58 Storm Grey /
Bluebell



PRM59 Rice /
Storm Grey

AVAILABILITY (see page 30 -31)



200 x 200 x 6.5mm



150 x 150 x 6.5mm



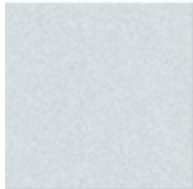
200 x 100 x 6.5mm



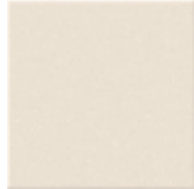
100 x 100 x 6.5mm

SPECIFICATION

| Wall | Floor | Other | Material | Finish |
|----------|-------|-------|----------------|---------|
| Internal | - | - | Glazed Ceramic | Various |



PRG11 Shark



PRS14 Magnolia Satin



PRS15 Shark Satin



PRG17 Spearmint



PRG20 Magnolia



PRG28 Duck Egg



PRG29 Glacier Blue



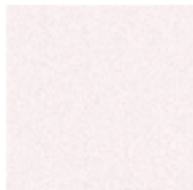
PRG30 Kiwi



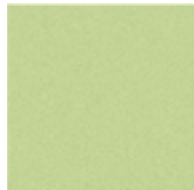
PRG31 Oyster



PRG32 Harebell



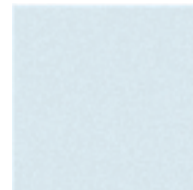
PRG39 Thistledown



PRG40 Pistachio



PRS41 Peppermint Satin



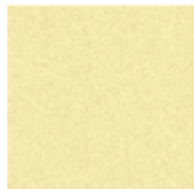
PRS42 Harebell Satin



PRG43 Peppermint



PRG50 Sun Haze



PRG51 Mimosa



PRG53 Lemon Ice



PRS54 Papaya Satin



PRG56 Mango



PRS76 Vanilla Satin



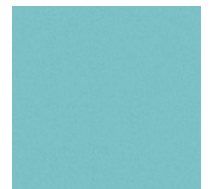
PRS77 Truffle Satin



PRS78 Yolk Satin



PRS79 Lime Satin



PRS80 Aqua Satin



PRM60 Magnolia /
Redwood



PRM61 Rice /
Victorian Green



PRM62 Barley /
Sugarcane



PRM63 Rice /
Raspberry



PRM64 Magnolia /
Cappuccino

kitchen & bathroom

prismatics

SPECIFICATION

| Wall | Floor | Other | Material | Finish |
|----------|-------|-------|----------------|---------|
| Internal | - | - | Glazed Ceramic | Various |

price group 3



PRV3 Victorian Blue



PRV4 Victorian Maroon



PRV5 Victorian Green



PRG6 Black



PRG8 Cappuccino



PRS13 Black Satin



PRG16 Teal



PRG18 Raspberry



PRG19 Tomato



PRG22 Chestnut



PRG26 Palm Green



PRG27 Deep Sea Green



PRG35 Redwood



PRG38 Morello



PRG44 Ocean Blue



PRG46 Kingfisher



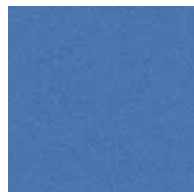
PRG48 Goldcrest



PRG52 Sunburst



PRG55 Pumpkin



PRS81 Lapis Satin



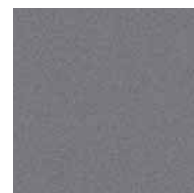
PRS82 Sweet Pea Satin



PRS83 Cayenne Satin



PRS84 Banana Satin



PRS86 Moleskin Satin



PRS87 Peacock Satin

AVAILABILITY (see page 30 - 31)



200 x 200 x 6.5mm



150 x 150 x 6.5mm



200 x 100 x 6.5mm



100 x 100 x 6.5mm



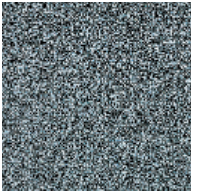
100 x 100mm
PRG16 Teal
PRG17 Spearmint
PRG28 Duck Egg
PRG43 Peppermint
PRG44 Ocean Blue
PRG45 Mintwater



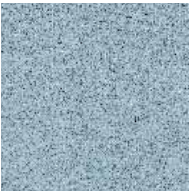
kerastar



KER6 Hermes



KKER13 Cronos



KER27 Priamus



KER28 Erevos



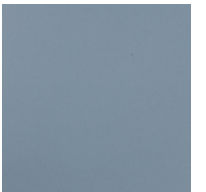
KER38 Nero



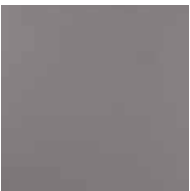
KER39 Arion



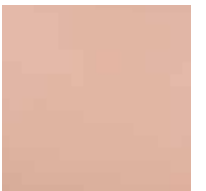
KER43 Gaia



KER44 Aeolos



KER48 Zeus



KER49 Apollo



KER53 Pegasos



KER54 Artemis

surfaces



Diamond



Discface

KER37 Estia 150 x 150mm Natural

SPECIFICATION

| Wall | Floor | Other | Material | Finish |
|---------------------|----------|---------------|---------------------|---------|
| Internal & External | Internal | Wet Barefoot* | Un-Glazed Porcelain | Various |

* Natural finish not suitable for wet barefoot areas

kitchen & bathroom kerastar



KER14 Athena



KER20 Perseas



KER25 Triton



KER29 Atlas



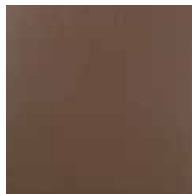
KER33 Icaros



KER37 Estia



KER40 Castor



KER41 Aris



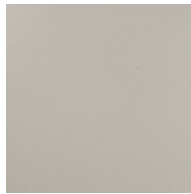
KER42 Helios



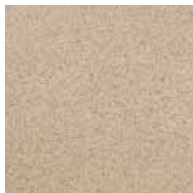
KER45 Daphne



KER46 Dimitra



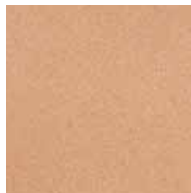
KER47 Olympos



KER50 Themis



KER51 Homer



KER52 Orpheas



KER55 Aphrodite



KER56 Hercules



KER57 Hiron



Gripfoot



Rocktop

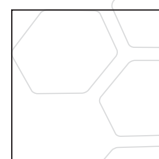


Natural

AVAILABILITY (see page 31)



300 x 300 x 8.5mm



200 x 200 x 8.5mm



150 x 150 x 8.5mm

availability - prismatic

| Code | Colour | Price Group | 100 x 100 x 6.5mm | 150 x 150 x 6.5mm | 200 x 100 x 6.5mm | 200 x 200 x 6.5mm |
|-------|-----------------|-------------|-------------------|-------------------|-------------------|-------------------|
| PRG1 | White | 1 | ■ | ■ | ■ | ■ |
| PRS12 | White Satin | 1 | ■ | ■ | ■ | ■ |
| PRV2 | Victorian Cream | 2 | ■ | ■ | ■ | ○ |
| PRG7 | Hawk Grey | 2 | ■ | ■ | ○ | ○ |
| PRG9 | Woodpigeon | 2 | ■ | ■ | ○ | ○ |
| PRG10 | Barley | 2 | ■ | ■ | ○ | ○ |
| PRG11 | Shark | 2 | ■ | ■ | ■ | ■ |
| PRS14 | Magnolia Satin | 2 | ■ | ■ | ■ | ○ |
| PRS15 | Shark Satin | 2 | ■ | ■ | ■ | ○ |
| PRG17 | Spearmint | 2 | ■ | ■ | ○ | ○ |
| PRG20 | Magnolia | 2 | ■ | ■ | ■ | ■ |
| PRG21 | Sugarcane | 2 | ■ | ■ | ○ | ○ |
| PRG23 | Rice | 2 | ■ | ■ | ■ | ○ |
| PRG24 | Storm Grey | 2 | ■ | ■ | ■ | ○ |
| PRG25 | Thistle | 2 | ■ | ■ | ○ | ○ |
| PRG28 | Duck Egg | 2 | ■ | ■ | ○ | ○ |
| PRG29 | Glacier Blue | 2 | ■ | ■ | ■ | ○ |
| PRG30 | Kiwi | 2 | ■ | ■ | ○ | ○ |
| PRG31 | Oyster | 2 | ■ | ■ | ○ | ○ |
| PRG32 | Harebell | 2 | ■ | ■ | ■ | ○ |
| PRG33 | Bluebell | 2 | ■ | ■ | ○ | ○ |
| PRG34 | Shell Pink | 2 | ■ | ■ | ○ | ○ |
| PRG36 | Peach Sorbet | 2 | ■ | ■ | ■ | ○ |
| PRG37 | Peach Melba | 2 | ■ | ■ | ○ | ○ |
| PRG39 | Thistledown | 2 | ■ | ■ | ■ | ○ |
| PRG40 | Pistachio | 2 | ■ | ■ | ○ | ○ |

| Code | Colour | Price Group | 100 x 100 x 6.5mm | 150 x 150 x 6.5mm | 200 x 100 x 6.5mm | 200 x 200 x 6.5mm |
|-------|----------------------|-------------|-------------------|-------------------|-------------------|-------------------|
| PRS41 | Peppermint Satin | 2 | ■ | ■ | ○ | ○ |
| PRS42 | Harebell Satin | 2 | ■ | ■ | ■ | ○ |
| PRG43 | Peppermint | 2 | ■ | ■ | ■ | ○ |
| PRG45 | Mintwater | 2 | ■ | ■ | ○ | ○ |
| PRS47 | Thistledown Satin | 2 | ■ | ■ | ■ | ○ |
| PRS49 | Mimosa Satin | 2 | ■ | ■ | ○ | ○ |
| PRG50 | Sun Haze | 2 | ■ | ■ | ○ | ○ |
| PRG51 | Mimosa | 2 | ■ | ■ | ○ | ○ |
| PRG53 | Lemon Ice | 2 | ■ | ■ | ■ | ○ |
| PRS54 | Papaya Satin | 2 | ■ | ■ | ○ | ○ |
| PRG56 | Mango | 2 | ■ | ■ | ■ | ○ |
| PRM57 | White/Shark | 2 | | ■ | | ■ |
| PRM58 | Storm Grey/Bluebell | 2 | | ■ | | ■ |
| PRM59 | Rice/Storm Grey | 2 | | ■ | | ■ |
| PRM60 | Magnolia/Redwood | 2 | | ■ | | ■ |
| PRM61 | Rice/Victorian Green | 2 | | ■ | | ■ |
| PRM62 | Barley/Sugarcane | 2 | | ■ | | ■ |
| PRM63 | Rice/Raspberry | 2 | | ■ | | ■ |
| PRM64 | Magnolia/Cappuccino | 2 | | ■ | | ■ |
| PRS73 | Willow Satin | 2 | ■ | ■ | | |
| PRS74 | Almond Satin | 2 | ■ | ■ | | |
| PRS75 | Buttermilk Satin | 2 | ■ | ■ | | |
| PRS76 | Vanilla Satin | 2 | ■ | ■ | | |
| PRS77 | Truffle Satin | 2 | ■ | ■ | | |
| PRS78 | Yolk Satin | 2 | ■ | ■ | | |
| PRS79 | Lime Satin | 2 | ■ | ■ | | |
| PRS80 | Aqua Satin | 2 | ■ | ■ | | |

availability - kerastar

| Code | Colour | Price Group | 100 x 100 x 6.5mm | 150 x 150 x 6.5mm | 200 x 100 x 6.5mm | 200 x 200 x 6.5mm |
|-------|------------------|-------------|-------------------|-------------------|-------------------|-------------------|
| PRV3 | Victorian Blue | 3 | ■ | ■ | ■ | ■ |
| PRV4 | Victorian Maroon | 3 | ■ | ■ | ■ | ■ |
| PRV5 | Victorian Green | 3 | ■ | ■ | ■ | ■ |
| PRG6 | Black | 3 | ■ | ■ | ■ | ■ |
| PRG8 | Cappuccino | 3 | ■ | ■ | ○ | ○ |
| PRS13 | Black Satin | 3 | ■ | ■ | ■ | ■ |
| PRG16 | Teal | 3 | ■ | ■ | ■ | ○ |
| PRG18 | Raspberry | 3 | ■ | ■ | ○ | ○ |
| PRG19 | Tomato | 3 | ■ | ■ | ■ | ■ |
| PRG22 | Chestnut | 3 | ■ | ■ | ■ | ○ |
| PRG26 | Palm Green | 3 | ■ | ■ | ■ | ■ |
| PRG27 | Deep Sea Green | 3 | ■ | ■ | ■ | ○ |
| PRG35 | Redwood | 3 | ■ | ■ | ■ | ○ |
| PRG38 | Morello | 3 | ■ | ■ | ○ | ○ |
| PRG44 | Ocean Blue | 3 | ■ | ■ | ○ | ○ |
| PRG46 | Kingfisher | 3 | ■ | ■ | ■ | ■ |
| PRG48 | Goldcrest | 3 | ■ | ■ | ○ | ○ |
| PRG52 | Sunburst | 3 | ■ | ■ | ■ | ■ |
| PRG55 | Pumpkin | 3 | ■ | ■ | ■ | ○ |
| PRS81 | Lapis Satin | 3 | ■ | ■ | | |
| PRS82 | Sweet Pea Satin | 3 | ■ | ■ | | |
| PRS83 | Cayenne Satin | 3 | ■ | ■ | | |
| PRS84 | Banana Satin | 3 | ■ | ■ | | |
| PRS86 | Moleskin Satin | 3 | ■ | ■ | | |
| PRS87 | Peacock Satin | 3 | ■ | ■ | | |

■ Stock

○ Made to Order

| Code | Colour | 150 x 150 x 6.5mm | 200 x 200 x 6.5mm | 300 x 300 x 10mm | 150 x 150mm gripfoot | 150 x 150mm discface | 300 x 300mm discface | 200 x 200mm diamond | 300 x 300mm rocktop |
|-------|-----------|-------------------|-------------------|------------------|----------------------|----------------------|----------------------|---------------------|---------------------|
| KER6 | Hermes | | | ■ | | | | | |
| KER13 | Cronos | ■ | | ■ | | ■ | ■ | | ■ |
| KER14 | Athena | ■ | ■ | ■ | ■ | ■ | ■ | ■ | ■ |
| KER20 | Perseas | | | ■ | | | | | |
| KER25 | Triton | ■ | ■ | ■ | | ■ | | ■ | |
| KER27 | Priamus | ■ | ■ | ■ | ■ | ■ | | ■ | |
| KER28 | Erevos | ■ | ■ | ■ | | | | | |
| KER29 | Atlas | | | ■ | | | | | |
| KER33 | Icaros | | | ■ | | | | | |
| KER37 | Estia | ■ | ■ | ■ | | | | ■ | |
| KER38 | Nero | | ■ | ■ | | | | | |
| KER39 | Arion | | | ■ | | | | | |
| KER40 | Castor | | | ■ | | | | | |
| KER41 | Aris | | | ■ | | | | | |
| KER42 | Helios | | | ■ | | | | | |
| KER43 | Gaia | | | ■ | | | | | |
| KER44 | Aeolos | | ■ | ■ | | | | ■ | |
| KER45 | Daphne | ■ | | ■ | | ■ | ■ | | |
| KER46 | Dimitra | | | ■ | | | | | |
| KER47 | Olympos | ■ | ■ | ■ | | | | | |
| KER48 | Zeus | ■ | | ■ | | | | | |
| KER49 | Apollo | | | ■ | | | | | |
| KER50 | Themis | | ■ | ■ | | | | | |
| KER51 | Homer | | | ■ | | | | | |
| KER52 | Orpheas | | | ■ | | | | | |
| KER53 | Pegasos | | | ■ | | | | | |
| KER54 | Artemis | ■ | ■ | ■ | ■ | ■ | ■ | ■ | ■ |
| KER55 | Aphrodite | ■ | ■ | | | ■ | ■ | ■ | |
| KER56 | Hercules | | | ■ | | ■ | | ■ | |
| KER57 | Hiron | | | ■ | | | | | |

colour notations

| Code | Colour | Reflectance Yl | NCS Lightness | NCS | Pantone | Pantone Architectural | BS4800 | RAL Design | RAL K5 |
|------------|---------------------|----------------|---------------|-----------|-----------|-----------------------|------------|------------|---------|
| PAYS1A | Cream | 71.45 | 0.87 | 1005-Y20R | NM 7401 | 13-0907 | 08 C 31 | 080 90 10 | 1015 |
| RUST1A | White | 85.95 | 0.94 | 0500-N | White | 11-0604 | - | 000 90 00 | 9010 |
| OPAL | Opal White | 85.95 | 0.94 | 0500-N | White | 11-0604 | - | 000 90 00 | 9010 |
| INTA1A/B/D | Beige | 71.45 | 0.87 | 1005-Y20R | NM 7401 | 13-0907 | 08 C 31 | 080 90 10 | 1015 |
| INTA4A/B/D | Aqua | 66.99 | 0.85 | 0520-R80B | 290 | 13-4304 | - | 230 90 05 | - |
| INTA6A/B/D | Peach | 80.16 | 0.92 | 0505-Y50R | - | 12-0811 | 08 B 18 | 060 90 05 | - |
| DUNE1A | White | 85.95 | 0.94 | 0500-N | White | 11-0604 | - | 000 90 00 | 9010 |
| DUNE2A | Natural | 73.66 | 0.89 | 1002-Y50R | - | 11-4301 | 22 B 15 | 000 90 00 | 9003 |
| DUNE4A | Grey | 72.28 | 0.88 | 1002-B | - | 14-4201 | - | 260 90 05 | - |
| DUNE5A | Terracotta | 35.29 | 0.60 | 3020-Y70R | 4735 | 15-1315 | - | - | - |
| DUNE6A | Slate Green | 54.80 | 0.77 | 2005-G20Y | 5517 | 13-0107 | - | 160 80 05 | - |
| PRM57 | White/Shark | 74.33 | 0.89 | N/A | N/A | 11-4202 | N/A | N/A | N/A |
| GEO57D | White/Shark | 74.33 | 0.89 | N/A | N/A | 11-4202 | N/A | N/A | N/A |
| PRM59 | Rice/Storm Grey | 54.44 | 0.77 | N/A | N/A | 13-0000 | N/A | N/A | N/A |
| GEO59D | Rice/Storm Grey | 54.44 | 0.77 | N/A | N/A | 13-0000 | N/A | N/A | N/A |
| PRM60 | Magnolia/Redwood | 54.71 | 0.77 | N/A | N/A | 12-0813 | N/A | N/A | N/A |
| GEO60D | Magnolia /Redwood | 54.71 | 0.77 | N/A | N/A | 12-0813 | N/A | N/A | N/A |
| PRM64 | Magnolia/Cappuccino | 54.71 | 0.77 | N/A | N/A | 12-0000 | N/A | N/A | N/A |
| GEO64D | Magnolia/Cappuccino | 54.71 | 0.77 | N/A | N/A | 12-0000 | N/A | N/A | N/A |
| PRG1 | White | 85.95 | 0.94 | 0500-N | White | 11-0604 | - | 000 90 00 | 9010 |
| GEO1B | White | 85.95 | 0.94 | 0500-N | White | 11-0604 | - | 000 90 00 | 9010 |
| PRV2 | Victorian Cream | 71.45 | 0.87 | 1005 Y20R | NM 7401 C | 13-0907 | 08 C 31 | 080 90 10 | 1015 |
| GEO2B | Victorian Cream | 71.45 | 0.87 | 1005 Y20R | NM 7401 C | 13-0907 | 08 C 31 | 080 90 10 | 1015 |
| CTSA4A | White | 83.68 | 0.93 | 0502-Y50R | - | 11-0105 | 08 B 15 | 060 90 05 | - |
| CTSA5A | Cream | 70.89 | 0.87 | 1005-Y50R | NM 482 U | 13-0907 | NM 04 B 15 | 060 80 10 | NM 1015 |
| CTSA6A | Beige | 50.10 | 0.74 | 2020-Y30R | 4675 | 14-1116 | - | 080 70 20 | 1001 |

colour notations

| Code | Colour | Reflectance Yl | NCS Lightness | NCS | Pantone | Pantone Architectural | BS4800 | RAL Design | RAL K5 |
|------------|-------------|----------------|---------------|-----------|-----------|-----------------------|------------|------------|---------|
| MASH1A/1B | Natural | 57.43 | 0.79 | 2005-G80Y | - | 14-0105 | - | 095 80 20 | - |
| EDAL1A/1B | Natural | 42.40 | 0.67 | 3005-Y20R | - | 14-0708 | - | - | - |
| CTMA3A | White/Grey | 72.59 | 0.88 | 1002-R50B | - | 14-4201 | - | 000 85 00 | - |
| CTMA4A | White/Beige | 83.68 | 0.93 | 0502-Y50R | - | 11-0105 | 08 B 15 | 060 90 05 | - |
| BVE2A | Natural | 71.45 | 0.87 | 1005 Y20R | NM 7401 C | 13-0907 | 08 C 31 | 080 90 10 | 1015 |
| BSAT5A | Black | 6.34 | 0.16 | 8500-N | Black | 19-0303 | - | 000 15 00 | 9017 |
| DIM13B/13C | Black | 6.34 | 0.16 | 8500-N | Black | 19-0303 | - | 000 15 00 | 9017 |
| ALPN1A | White | 85.95 | 0.94 | 0500-N | White | 11-0604 | - | 000 90 00 | 9010 |
| KAL1A | Cream | 71.45 | 0.87 | 1005-Y20R | NM 7401 | 13-0907 | 08 C 31 | 080 90 10 | 1015 |
| PW1 | Polar White | 85.95 | 0.94 | 0500-N | White | 11-0604 | - | 000 90 00 | 9010 |
| URB1A | White | 85.95 | 0.94 | 0500-N | White | 11-0604 | - | 000 90 00 | 9010 |
| URB12A | White | 85.95 | 0.94 | 0500-N | White | 11-0604 | - | 000 90 00 | 9010 |
| CTSA1A | White | 83.68 | 0.93 | 0502-Y50R | - | 11-0105 | 08 B 15 | 060 90 05 | - |
| CTSA2A | Cream | 70.89 | 0.87 | 1005-Y50R | NM 482 U | 13-0907 | NM 04 B 15 | 060 80 10 | NM 1015 |
| CTSA3A | Beige | 50.10 | 0.74 | 2020-Y30R | 4675 | 14-1116 | - | 080 70 20 | 1001 |
| CTMA1A | White/Grey | 72.59 | 0.88 | 1002-R50B | - | 14-4201 | - | 000 85 00 | - |
| CTMA2A | White/Beige | 83.68 | 0.93 | 0502-Y50R | - | 11-0105 | 08 B 15 | 060 90 05 | - |
| PURE1A | White | 85.95 | 0.94 | 0500-N | White | 11-0604 | - | 000 90 00 | 9010 |
| MLOCKA/B | Beige | 72.91 | 0.88 | 1005-G50Y | 454 | 12-0311 | 10 B 17 | 090 80 10 | - |
| BXTONA/B | Natural | 71.45 | 0.87 | 1005 Y20R | NM 7401 C | 13-0907 | 08 C 31 | 080 90 10 | 1015 |
| CLAS1A/1B | White Satin | 85.95 | 0.94 | 0500-N | White | 11-0604 | - | 000 90 00 | 9010 |
| HOR1A | Cream | 71.45 | 0.87 | 1005-Y20R | NM 7401 | 13-0907 | 08 C 31 | 080 90 10 | 1015 |
| HOR2A | Blue | 69.05 | 0.86 | 1005-B20G | - | 13-4103 | - | 220 90 05 | - |
| HOR3A | Pink | 69.73 | 0.87 | 1005-Y80R | - | 13-1504 | 04 E 49 | 030 90 10 | - |
| ECL1B/1D | Cream | 71.45 | 0.87 | 1005-Y20R | NM 7401 | 13-0907 | 08 C 31 | 080 90 10 | 1015 |
| ECL2B/2D | Blue | 69.05 | 0.86 | 1005-B20G | - | 13-4103 | - | 220 90 05 | - |
| ECL3B/3D | Pink | 69.73 | 0.87 | 1005-Y80R | - | 13-1504 | 04 E 49 | 030 90 10 | - |

colour notations

| Code | Colour | Reflectance Yl | NCS Lightness | NCS | Pantone | Pantone Architectural | BS4800 | RAL Design | RAL K5 |
|-------------------|-----------------|----------------|---------------|-----------|--------------|-----------------------|------------|------------|---------|
| SPAR1B/1D | Cream | 71.45 | 0.87 | 1005-Y20R | NM 7401 | 13-0907 | 08 C 31 | 080 90 10 | 1015 |
| SPAR2B/2D | Blue | 69.05 | 0.86 | 1005-B20G | - | 13-4103 | - | 220 90 05 | - |
| SPAR3B/3D | Pink | 69.73 | 0.87 | 1005-Y80R | - | 13-1504 | 04 E 49 | 030 90 10 | - |
| Prismatics | | | | | | | | | |
| Group 1 | | | | | | | | | |
| PRG1 | White | 85.95 | 0.94 | 0500-N | White | 11-0604 | - | 000 90 00 | 9010 |
| PRS12 | White Satin | 85.95 | 0.94 | 0500-N | White | 11-0604 | - | 000 90 00 | 9010 |
| Prismatics | | | | | | | | | |
| Group 2 | | | | | | | | | |
| PRV2 | Victorian Cream | 71.45 | 0.87 | 1005 Y20R | NM 7401 C | 13-0907 | 08 C 31 | 080 90 10 | 1015 |
| PRG7 | Hawk Grey | 31.06 | 0.56 | 4005 B20G | 443 C | 17-5102 | 18 B 21 | 220 60 05 | NM 7042 |
| PRG9 | Woodpigeon | 32.19 | 0.57 | 4005 Y80R | 408 C | 16-1406 | NM 04 B 21 | 040 60 05 | NM 7036 |
| PRG10 | Barley | 56.64 | 0.78 | 2005 Y10R | NM 7500 C | 12-0703 | 10 B 17 | 090 80 10 | NM 1014 |
| PRG11 | Shark | 62.63 | 0.82 | 1502-G | 413 C | 13-4403 | NM 10 A 03 | 000 85 00 | 9018 |
| PRS14 | Magnolia Satin | 67.48 | 0.85 | 1010-Y40R | NM 7401 | 12-1403 | 08 B 17 | 075 90 10 | NM 1015 |
| PRS15 | SharkSatin | 62.63 | 0.82 | 1502-G | 413 | 13-4403 | NM 10 A 03 | 000 85 00 | 9018 |
| PRG17 | Spearmint | 25.69 | 0.49 | 3040-B30G | NM 7472 C | 16-5121 | NM 18 E 51 | 200 60 30 | 9017 |
| PRG20 | Magnolia | 71.37 | 0.87 | 1005-Y40R | NM 7401 C | 12-1403 | 08 B 17 | 075 90 10 | NM 1015 |
| PRG21 | Sugarcane | 51.83 | 0.75 | 2020-Y | 4535 C | 13-0915 | NM 10 C 33 | 095 80 30 | 1000 |
| PRG23 | Rice | 69.96 | 0.87 | 1005-Y60R | Warm Grey 1C | 13-0002 | NM 04 B 15 | 060 90 05 | 9001 |
| PRG24 | Storm Grey | 45.26 | 0.70 | 3000-N | 400 C | 14-4103 | 00 A 05 | 000 75 00 | NM 7030 |
| PRG25 | Thistle | 26.63 | 0.50 | 3030-R40B | 687 C | 16-3310 | NM 02 7 37 | 330 60 25 | NM 4008 |
| PRG28 | Duck Egg | 38.69 | 0.64 | 2030-B30G | 5493 C | 15-4712 | NM 18 E 51 | 200 70 25 | 6034 |
| PRG29 | Glacier Blue | 71.09 | 0.87 | 1005-B80G | NM 621 C | 11-4805 | NM 18 E 49 | 160 90 05 | NM 9018 |
| PRG30 | Kiwi | 35.18 | 0.60 | 3030-G50Y | NM 5777 C | 15-0336 | NM 12 D 43 | 110 70 40 | NM 6025 |
| PRG31 | Oyster | 54.41 | 0.77 | 2010-G50Y | 5803 C | 13-6105 | NM 12 B 17 | 110 80 10 | NM 9002 |

colour notations

| Code | Colour | Reflectance Yl | NCS Lightness | NCS | Pantone | Pantone Architectural | BS4800 | RAL Design | RAL K5 |
|-------|----------------------|----------------|---------------|-----------|-----------|-----------------------|------------|------------|---------|
| PRG32 | Harebell | 58.91 | 0.80 | 1010-R90B | 5455 C | 12-4305 | NM 20 C 33 | 230 90 05 | NM 7035 |
| PRG33 | Bluebell | 36.73 | 0.62 | 2030-R80B | 651 C | 15-3920 | NM 20 E 51 | 260 70 20 | NM 5023 |
| PRG34 | Shell Pink | 58.92 | 0.80 | 1020-Y70R | 7415 C | 12-0915 | NM 04 C 33 | 050 80 20 | NM 3012 |
| PRG36 | Peach Sorbet | 69.96 | 0.87 | 1005-Y60R | NM 4755 C | 12-1108 | NM 08 B 17 | 060 90 05 | NM 9001 |
| PRG37 | Peach Melba | 57.40 | 0.79 | 1020-Y60R | 474 C | 14-1224 | NM 06 C 33 | 060 80 20 | NM 3012 |
| PRG39 | Thistledown | 69.18 | 0.86 | 1005-R | NM 482 C | 11-2409 | 04 B 15 | 010 90 05 | - |
| PRG40 | Pistachio | 62.28 | 0.82 | 1030-G50Y | 7492 C | 13-0324 | NM 12 C 33 | 110 80 30 | - |
| PRS41 | Peppermint Satin | 62.38 | 0.82 | 1020-G | 559 | 13-5911 | 14 C 35 | 160 80 15 | NM 6027 |
| PRS42 | Harebell Satin | 66.15 | 0.84 | 1010-R90B | 5455 | 12-4305 | NM 20 C 33 | 230 90 05 | NM 7035 |
| PRG43 | Peppermint | 62.38 | 0.82 | 1020-G | 559 C | 13-5911 | 14 C 35 | 160 80 15 | NM 6027 |
| PRG45 | Mintwater | 84.68 | 0.94 | 0510-G90Y | NM 5595 C | 12-6207 | 14 C 31 | 140 90 05 | NM 9018 |
| PRS47 | Thistledown Satin | 69.18 | 0.86 | 1005-R | NM 482 | 11-2409 | 04 B 15 | 010 90 05 | - |
| PRS49 | Mimosa Satin | 65.28 | 0.84 | 1020-Y20R | 607 | 12-0721 | NM 10 E 49 | 095 90 30 | NM 1016 |
| PRG50 | Sun Haze | 65.28 | 0.84 | 1020-Y20R | 155 C | 13-0917 | - | 080 80 30 | NM 1001 |
| PRG51 | Mimosa | 70.02 | 0.87 | 1020-Y | 607 C | 12-0721 | NM 10 E 49 | 095 90 30 | NM 1016 |
| PRG53 | Lemon Ice | 84.68 | 0.94 | 0510-G90Y | NM 607 C | 11-0104 | 12 B 15 | 100 90 10 | NM 1013 |
| PRS54 | Papaya Satin | 59.86 | 0.81 | 1030-Y30R | 1355 | 13-1027 | 06 E 50 | 070 80 40 | NM 1034 |
| PRG56 | Mango | 55.02 | 0.77 | 1050-Y20R | 1365 C | 13-0942 | NM 06 E 50 | 075 80 60 | 1017 |
| PRM57 | White/Shark | 74.33 | 0.89 | N/A | N/A | 11-4202 | N/A | N/A | N/A |
| PRM58 | Storm Grey/Bluebell | 45.26 | 0.70 | N/A | N/A | 15-4101 | N/A | N/A | N/A |
| PRM59 | Rice/Storm Grey | 54.44 | 0.77 | N/A | N/A | 13-0000 | N/A | N/A | N/A |
| PRM60 | Magnolia/Redwood | 54.71 | 0.77 | N/A | N/A | 12-0813 | N/A | N/A | N/A |
| PRM61 | Rice/Victorian Green | 56.12 | 0.78 | N/A | N/A | 12-0104 | N/A | N/A | N/A |
| PRM62 | Barley/Sugarcane | 52.25 | 0.75 | N/A | N/A | 14-1108 | N/A | N/A | N/A |
| PRM63 | Rice/Raspberry | 51.63 | 0.75 | N/A | N/A | 13-1405 | N/A | N/A | N/A |
| PRM64 | Magnolia/Capuccino | 54.71 | 0.77 | N/A | N/A | 12-0000 | N/A | N/A | N/A |
| PRS73 | Willow Satin | 68.11 | 0.86 | 1010-G10Y | 5595 | 13-6006 | 14 C 31 | 130 80 10 | - |

colour notations

| Code | Colour | Reflectance Yl | NCS Lightness | NCS | Pantone | Pantone Architectural | BS4800 | RAL Design | RAL K5 |
|-------|------------------|----------------|---------------|-----------|---------|-----------------------|------------|------------|---------|
| PRS74 | Almond Satin | 82.27 | 0.93 | 0505-Y80R | 489 | 13-1107 | 08 B 17 | 060 90 10 | - |
| PRS75 | Buttermilk Satin | 84.98 | 0.94 | 0505-Y20R | NM 4545 | 12-0804 | 10 C 31 | 095 90 10 | 1015 |
| PRS76 | Vanilla Satin | 85.00 | 0.94 | 0505-G80Y | - | 11-0105 | NM 10 C 31 | 090 90 10 | 1013 |
| PRS77 | Truffle Satin | 32.19 | 0.57 | 4005-Y80R | 408 | 16-1406 | 08 B 21 | 020 70 05 | - |
| PRS78 | Yolk Satin | 61.03 | 0.81 | 1050-Y10R | 141 | 14-0837 | NM 10 C 35 | 085 80 60 | NM 1002 |
| PRS79 | Lime Satin | 56.40 | 0.78 | 0565-G50Y | 381 | 14-0446 | 12 E 53 | 110 80 60 | - |
| PRS80 | Aqua Satin | 40.72 | 0.66 | 2030-B50G | 536 | 15-5209 | NM 16 C 37 | 190 70 20 | 6034 |

Prismatics

Group 3

| | | | | | | | | | |
|-------|------------------|-------|------|-----------|-----------|---------|------------|-----------|---------|
| PRV3 | Victorian Blue | 5.56 | 0.14 | 7020 R60B | 275 C | 13-3830 | NM 20 C 40 | 300 20 30 | NM 5022 |
| PRV4 | Victorian Maroon | 6.25 | 0.16 | 6030 R10B | 195 C | 19-1522 | NM 02 C 39 | 020 30 30 | 3005 |
| PRV5 | Victorian Green | 8.49 | 0.21 | 7020 G30Y | NM 574 C | 19-0315 | NM 14 C 39 | 140 30 20 | NM 6020 |
| PRG6 | Black | 4.47 | 0.12 | 9000-N | Black C | 19-0303 | - | 000 15 00 | 9017 |
| PRG8 | Capuccino | 16.68 | 0.36 | 6010 Y30R | NM 4725 C | 17-0808 | NM 08 B 25 | 060 50 20 | NM 8025 |
| PRS13 | Black Satin | 6.34 | 0.16 | 8500-N | Black | 19-0303 | - | 000 15 00 | 9017 |
| PRG16 | Teal | 4.24 | 0.22 | 6030-B30G | 3025 C | 19-4318 | NM 18 C 39 | 240 30 30 | 9010 |
| PRG18 | Raspberry | 10.41 | 0.25 | 5030-R20B | 696 C | 18-1718 | NM 02 C 39 | 350 40 30 | NM 4002 |
| PRG19 | Tomato | 17.00 | 0.36 | 2070-Y80R | 180 C | 17-1564 | NM 04 E 53 | 040 40 67 | 2002 |
| PRG22 | Chestnut | 6.04 | 0.15 | 8010-Y70R | 4625 C | 19-1235 | NM 08 B 29 | 040 20 19 | 8016 |
| PRG26 | Palm Green | 18.06 | 0.38 | 4040-G | NM 555 C | 18-6022 | 14 E 53 | 160 50 40 | 6024 |
| PRG27 | Deep Sea Green | 9.24 | 0.22 | 6030-B30G | 5473 C | 18-5418 | NM 16 D 45 | 200 30 20 | 5020 |
| PRG35 | Redwood | 20.00 | 0.41 | 3050-Y70R | NM 7522 C | 18-1447 | NM 06 D 45 | 050 50 50 | 2001 |
| PRG38 | Morello | 11.20 | 0.26 | 3560-Y80R | 484 C | 18-1354 | 04 D 45 | 040 40 50 | 3013 |
| PRG44 | Ocean Blue | 15.02 | 0.33 | 5030-B50G | 5483 C | 19-5217 | NM 16 C 37 | 200 40 20 | NM 6004 |
| PRG46 | Kingfisher | 14.99 | 0.33 | 4040-R80B | 660 C | 18-3945 | NM 20 D 45 | 280 40 40 | NM 5002 |
| PRG48 | Goldcrest | 40.58 | 0.66 | 2060-Y10R | 124 C | 15-1046 | NM 08 E 51 | 080 70 70 | 1005 |
| PRG52 | Sunburst | 70.01 | 0.87 | 0570-G90Y | 604 C | 12-0752 | NM 10 E 53 | 090 80 90 | NM 1018 |

colour notations


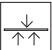
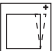











| Code | Colour | Reflectance Yl | NCS Lightness | NCS | Pantone | Pantone Architectural | BS4800 | RAL Design | RAL K5 |
|-----------------|-----------------|----------------|---------------|-----------|-----------------|-----------------------|------------|------------|---------|
| PRG55 | Pumpkin | 27.34 | 0.51 | 2070-Y40R | 1525 C | 16-1253 | 06 E 56 | 060 60 70 | NM 2011 |
| PRS81 | Lapis Satin | 25.02 | 0.48 | 2050-R80B | - | 17-4027 | - | 270 50 35 | NM 5023 |
| PRS82 | Sweet Pea Satin | 33.60 | 0.58 | 2050-G20Y | NM 359 | 16-0237 | NM 14 E 51 | 140 60 40 | NM 6032 |
| PRS83 | Cayenne Satin | 23.34 | 0.46 | 1070-Y90R | 179 | 17-1558 | 04 E 53 | 030 50 60 | 3000 |
| PRS84 | Banana Satin | 69.91 | 0.87 | 0560-G90Y | 106 | 13-0746 | NM 10 E 53 | 090 90 60 | 1018 |
| PRS86 | Moleskin Satin | 23.27 | 0.46 | 5005-R80B | 444 | 18-0000 | 00 A 09 | 000 50 00 | NM 7037 |
| PRS87 | Peacock Satin | 17.72 | 0.37 | 4040-B30G | NM 549 | 18-4726 | NM 16 D 45 | 200 50 30 | NM 5018 |
| Kerastar | | | | | | | | | |
| KER6 | Hermes | 71.45 | 0.87 | 1005-Y20R | NM Warm Grey 1U | 13-0905 | NM 10 B 15 | 080 80 10 | NM 1015 |
| KER13 | Cronos | 16.03 | 0.35 | 6500-N | NM 424 U | 16-0000 | NM 00 A 09 | 000 45 00 | - |
| KER14 | Athena | 71.45 | 0.87 | 1002-Y50R | NM 7527 U | 14-4501 | NM 08 B 15 | 080 80 10 | NM 7044 |
| KER20 | Perseas | 55.71 | 0.78 | 2005-Y30R | NM 482 U | 13-0907 | NM 08 B 17 | 080 80 10 | NM 1015 |
| KER25 | Triton | 49.72 | 0.73 | 2502-Y | NM 420 U | 13-4403 | NM 10 A 03 | 080 70 05 | NM 7044 |
| KER27 | Priamus | 41.21 | 0.66 | 3005-B20G | NM 5435 U | 15-4305 | NM 18 C 35 | 250 70 15 | - |
| KER28 | Erevos | 6.34 | 0.16 | 8500-N | Black 3 U | 19-0000 | NM 00 A 13 | 000 25 00 | 8022 |
| KER29 | Atlas | 15.16 | 0.33 | 5030-Y70R | 484 U | 18-1441 | NM 04 C 39 | 040 40 30 | 8002 |
| KER33 | Icaros | 13.03 | 0.29 | 5030-R90B | 302 U | 19-4305 | NM 20 D 45 | 250 40 20 | 5000 |
| KER37 | Estia | 85.71 | 0.94 | 0502-Y | Warm Grey 1 U | 11-0103 | NM 00 A 01 | 080 90 05 | 9001 |
| KER38 | Nero | 8.41 | 0.20 | 8000-N | NM Black 3 U | 19-1102 | NM 00 A 13 | 000 25 00 | 7021 |
| KER39 | Arion | 56.12 | 0.78 | 2005-Y20R | 7501 U | 12-0605 | NM 08 B 17 | 080 70 10 | NM 1014 |
| KER40 | Castor | 32.58 | 0.57 | 4005-Y20R | 7530 U | 16-1210 | 08 B 21 | 060 50 10 | NM 7006 |
| KER41 | Aris | 11.48 | 0.27 | 7010-Y50R | 4625 U | 19-1121 | NM 08 B 29 | 050 30 10 | 8028 |
| KER42 | Helios | 49.70 | 0.73 | 2020-Y20R | 7508 U | 15-1220 | NM 06 C 33 | 070 70 30 | 1001 |
| KER43 | Gaia | 31.72 | 0.56 | 3030-Y50R | 7510 U | 17-1328 | NM 06 C 37 | 060 50 40 | 1011 |
| KER44 | Aeolos | 51.49 | 0.75 | 2010-R90B | 5435 U | 16-4109 | NM 18 C 35 | 250 70 10 | NM 5014 |
| KER45 | Daphne | 34.87 | 0.60 | 3020-B30G | 5493 U | 15-5207 | NM 18 E 50 | 210 70 15 | NM 6034 |
| KER46 | Dimitra | 18.78 | 0.39 | 5020-G10Y | 626 U | 18-6114 | 14 C 39 | 160 50 15 | 6028 |

colour notations

| Code | Colour | Reflectance Yl | NCS Lightness | NCS | Pantone | Pantone Architectural | BS4800 | RAL Design | RAL K5 |
|-------|-----------|----------------|---------------|-----------|---------------|-----------------------|------------|------------|---------|
| KER47 | Olympos | 38.16 | 0.63 | 3502-Y | Cool Grey 3 U | 15-6304 | 10 A 07 | 080 70 05 | 7030 |
| KER48 | Zeus | 22.20 | 0.44 | 5500-N | 445 U | 17-1500 | NM 00 A 09 | 000 50 00 | 7039 |
| KER49 | Apollo | 51.63 | 0.75 | 2010-Y70R | 7514 U | 14-1307 | NM 04 E 49 | 050 80 10 | - |
| KER50 | Themis | 41.39 | 0.66 | 3010-Y30R | NM 481 U | 13-0908 | NM 08 B 17 | 070 80 10 | NM 1014 |
| KER51 | Homer | 49.70 | 0.73 | 2020-Y20R | NM 7508 U | 13-1009 | NM 06 C 33 | 075 80 20 | NM 1001 |
| KER52 | Orpheas | 34.07 | 0.59 | 3030-Y30R | NM 7510 U | 15-1225 | NM 08 C 35 | 060 70 30 | NM 1011 |
| KER53 | Pegasos | 70.89 | 0.87 | 1005-Y50R | NM 482 U | 13-0907 | NM 04 B 15 | 060 80 10 | NM 1015 |
| KER54 | Artemis | 40.04 | 0.65 | 2030-B10G | NM 5503 U | 14-4810 | NM 18 E 50 | 210 70 15 | NM 5024 |
| KER55 | Aphrodite | 35.29 | 0.60 | 3020-Y70R | NM 7514 U | 14-1316 | NM 04 C 33 | 040 60 20 | - |
| KER56 | Hercules | 16.05 | 0.35 | 6010-Y50R | NM 4625 U | 17-0909 | NM 08 B 29 | 050 50 10 | NM 8025 |
| KER57 | Hiron | 32.07 | 0.57 | 4010-Y30R | NM 7530 U | 16-1407 | NM 08 B 21 | 060 60 10 | NM 1019 |



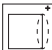
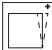











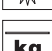
Note: These results are from Johnson Tiles internal test reports and are to be used for guidance only. All colour notations marked as NM are Nearest Match. For pattern tiles Reflectance, Lightness and Colour Notation values are for the general colour hue of the tile.

physical properties - wall tiles

| Test | Standard | Requirement | Typical Test Value |
|---|--------------------------------|-------------------------|---|
|  Length/Width | 10545-2 (BS6431:Part10/EN98) | ±0.5% | ±0.25% |
|  Warpage | 10545-2 (BS6431:Part10/EN98) | Max 0.5% | Max 0.3% |
|  Rectangularity | 10545-2 (BS6431:Part10/EN98) | ±0.5% | ±0.4% |
|  Straightness of Side | 10545-2 (BS6431:Part10/EN98) | ±0.3% | ±0.15% |
|  Water Absorption | 10545-3 (BS6431:Part11/EN99) | 10% to 20% | 15% to 17% |
|  Modulus of Rupture | 10545-4 (BS6431:Part12/EN100) | Ave 15N/mm ² | 25N/mm ² |
|  Scratch Hardness | BS6431:Part13/EN101 | ≥3 | 4 |
|  Frost Resistance | Not Applicable | | Not suitable for installations where temperatures may fall below freezing |
|  Crazing Resistance | 10545-11 (BS6431:Part17/EN105) | Pass | Pass |
|  Chemical Resistance | 10545-13 (BS6431:Part19/EN122) | Class C | Class A-B (better) |
|  Stain Resistance | 10545-14 (BS6431:Part19/EN122) | Min Class 3 | Class 3 (better) |
|  Fire Rating | | | Class 0 Non Combustable |
|  UV Colour Resistance | | | Unaffected by light |
|  Weight/m ² | | | |
| Product Thickness 6.5mm | | | 11kgs |
| Product Thickness 8mm | | | 13.5kgs |
| Product Thickness 10mm | | | 17.2kgs |

Wall tiles are classed as BIII products

physical properties - floor tiles

| Test | Standard | Requirement | Typical Test Value |
|--|--------------------------------|--|--|
|  Length/Width | 10545-2 (BS6431:Part10/EN98) | ±0.75% | ±0.5% |
|  Thickness | 10545-2 (BS6431:Part10/EN98) | ±5% | ±2.5% |
|  Straightness of side | 10545-2 (BS6431:Part10/EN98) | ±0.5% | ±0.3% |
|  Rectangularity | 10545-2 (BS6431:Part10/EN98) | ±0.6% | ±0.5% |
|  Surface flatness | 10545-2 (BS6431:Part10/EN98) | ±0.5% | ±0.35% |
|  Water Absorption | 10545-3 (BS6431:Part11/EN99) | ≤0.5% | <0.1% |
|  Modulus of Rupture | 10545-4 (BS6431:Part12/EN100) | ≥35N/mm ² | >55N/mm ² |
|  Abrasion Resistance | 10545-6 (BS6431:Part14/EN102) | ≤175mm ³ | ≤95mm ³ |
|  Linear Thermal Expansion | 10545-8 (BS6431:Part15/EN103) | Max 9 x 10 ⁻⁶ K ⁻¹ | 3.5 x 10 ⁻⁶ K ⁻¹ |
|  Thermal Shock | 10545-9 (BS6431:Part16/EN104) | Pass | Pass |
|  Frost Resistance | 10545-12 (BS6431:Part22/EN202) | Resistant | Resistant |
|  Chemical Resistance | 10545-13 (BS6431:Part19/EN122) | Class C | Class A-B (better) |
|  Stain Resistance | 10545-14 (BS6431:Part19/EN122) | Min Class 3 | Class 3 -5 (better) |
|  Fire Rating | | | Class 0 Non Combustable |
|  UV Colour Resistance | | | Unaffected by light |
|  Weight/m ² | | | 19.2kg |

Kerastar are classed as BIa products

adhesives and grouts

Adhesives and grouts are an integral part of our tile product offer and offer the reassurance of single source supply. All of our tile adhesives and grouting products fully conform to international standards and are extensively used throughout the UK and overseas. Material and safety datasheets are available for all products in the range. NBS specifications are available upon request.

Some of the main products in the range are:

Cementitious Adhesives

One-Part Flexible (White)

Requires no additives - just water required, suitable for porcelain tiles both inside and outside, has built in flexibility and is pool grade

Speed Flex

A water resistant 2 part adhesive suitable for fixing floor tiles onto wooden floors – sets within 3 hours of usage

Rapid Set Flexible (Grey)

Suitable for porcelain tiles both inside and outside, no additives – just water required, suitable for plywood overlaid floors and sets within 3 hours

Pourable Thick Bed Flex

Suitable for porcelain tiles both inside and outside, particularly suited to areas where the substrate is uneven and for large format tiles, no additives required – just water.

Dispersion Adhesives (Ready Mixed)

Grip Tite Super

Non slip and suitable for large and small wall tiles in kitchens, bathrooms and showers

Grip Water Tite

Flexible and suitable for large tiles in power shower environments

Grouting Products

Wall Grout

For grouting joints 1 to 3mm wide, water resistant and suitable for interior and exterior usage. White

No Mould Flexible Grout

Antibacterial for hygiene critical areas. Joints 1 to 5mm wide, ideal for mosaics and power showers. Bright White

Wide Joint Flexible Grout

Suitable for heated floors or timber overlay. Joints from 3 to 20mm wide. Interior or exterior use and water resistant. Various colours available

Wide Joint Grout

Interior or exterior use, suitable for porcelain tiles, weather and frost resistant. Joints from 2 to 12mm wide. Various colours available

Easy Clean Epoxy Grout

Very high strength grout (can also be used as an adhesive). Impervious/waterproof, hygienic and easy to use. Joints from 1 to 12mm wide. White

installation - walls

Codes of Practice

All fixing of glazed tiles should be in accordance with the following codes of practice guidelines:

BS5385 Part 1 – 1995 (Code of practice for the design and installation of internal wall tiling and mosaics in normal conditions)

BS8000 Section 11.1 – 1989 (Workmanship on Building Sites, Part 11, Code of practice for wall and floor tiling).

Substrates

Before tiling is commenced it is important to ensure that the correct minimum curing periods have been observed for all substrates:

Concrete – 6 weeks

Rendering (non modified) – 2 weeks

Gypsum Plastering – 4 weeks

Brickwork/Blockwork – 6 weeks

Accuracy of the substrate must be checked to ensure that the guidance given in BS5385 has been achieved i.e. "local variations in level for a nominally flat floor or wall should be such that, when checked with a 2m straightedge, any gap under the straightedge between points of contact does not exceed 3mm".

Movement Joints in Wall Tiles

The location, type and scope of all movement joints must be ascertained prior to any fixing works. All structural joints must be followed through to the face of the tile at full width with intermediate movement joints (minimum 6mm wide) being situated at:

Changes of plane (including internal wall corners)

Wall/floor junctions

Where tiling abuts other materials

For walls 3m to 4.5m maximum centres both horizontally and vertically

Movement joints can either be filled with a suitable backer, bond breaker and filler (e.g. silicone – please check with manufacturer for suitability) or be of the pre-formed variety.

Fixing Tiles

All tiles should be fixed with a notched bed trowel to achieve the required minimum adhesive coverage for the installation type, this ensures maximum durability and strength within the installation and long term adhesion performance. It is good practice to periodically remove a recently fixed tile to ensure that the correct bedding is being achieved and maintained. When fixing all tiles care must be taken to ensure that no lipping occurs.

Adhesives

Adhesives should be in accordance with BS EN 12004, Class C1, C2, D1 or D2. Particular adhesive choice will be governed by the substrate.

Johnson Tiles recommend the use of Johnson's Professional adhesives and grouts - see below.

Grouts

The choice of grout type should reflect the expected service conditions of the installation.

For general internal wall tiling in dry conditions grouts should be class CG1 i.e. Johnson Professional Fine Joint Grout. For walls subject to frequent wetting ie showers and pool halls grout should be class CG2 i.e. Johnson Professional No Mould Flexible Grout.

For walls where hygiene is important ie commercial kitchens and hospitals grout should be class RG1 i.e. Johnson Professional Easy Clean Epoxy.

For specific adhesive or grout advice please contact Johnson Professional helpline 0870 609 2851

| Substrate | Johnson's Professional Adhesive |
|---------------------|---|
| Concrete | One Part Flexible |
| Brickwork/Blockwork | One Part Flexible |
| Sand/Cement Render | One Part Flexible |
| Plaster Gypsum | One Part Flexible Prime with Johnson Professional Prime & Seal |
| Plasterboard | One Part Flexible Prime with Johnson Professional Prime & Seal |

cleaning - walls

Maintaining the appearance and characteristics of glazed tiles is achieved with the implementation of a suitable cleaning regime. It must be stressed that the cleaning material manufacturers instructions must be followed at all times.

Builders Clean

This should be undertaken prior to a wall being brought into service. The builders clean removes any residual film left over from the grouting operation and is a one off cleaning process. It is imperative that this is carried out as any grout residues left behind will act as a key for dirt.

Cementitious Grouts

The use of a mild acid decementing solution followed by thorough rinsing will remove all but the most stubborn of cement residues.

Epoxide Grouts

It is essential that ALL residue be removed from the surface of the tile during the grouting process and before the resin cures. Failure to achieve this will result in a very difficult and expensive process using gel-type epoxide removers.

Routine Cleaning

The regular use of detergents or other cleaning agents which are excessively acidic or alkaline could cause irreversible damage to the tile surface and should not be used.

Manual Cleaning

Glazed wall tiles can be wiped with warm water to which a neutral or nearly neutral detergent has been added.

Periodic Deep Cleaning

Occasionally foreign matter may cause surface marks that cannot be removed with the usual cleaning processes and materials. If the surface mark cannot be removed, other materials should be considered (it is advisable to experiment on a small inconspicuous area):

Paint – Paint Remover

Organic Stains – Bleach or one off treatment with washing soda

Oil, Fat, Grease – Detergent or degreaser

Mould Growth – Household bleach or proprietary cleaner

Tea, Coffee, Ink – Household bleach or proprietary cleaner

Abrasive powders or cleaners should never be used on ceramic tiles.

installation - floors

Codes of Practice

All fixing of Kerastar floor and cladding tiles should be in accordance with the following codes of practice guidelines:-

BS5385 Part 1 – 1995 (Code of practice for the design and installation of internal wall tiling and mosaics in normal conditions)

BS5385 Part 2 – 2006 (Code of practice for the design and installation of external ceramic wall tiling and mosaics)

BS5385 Part 3 – 1989 (Code of practice for the design and installation of ceramic floor tiles and mosaics)

BS5385 Part 4 – 1992 (Code of practice for ceramic tiling and mosaic in specific conditions)

BS8000 Section 11.1 – 1989 (Workmanship on Building Sites, Part 11, Code of practice for wall and floor tiling).

Kerastar floor and cladding tiles are made from quality refined raw materials and are un-glazed class B1a (porcelain) products, as such they require the use of polymer modified adhesives (classification C2*) and grouts specially formulated for fixing and grouting of porcelain tiles.

** Check with adhesive manufacturer for additional C1 product suitability.*

Substrates

Before tiling is commenced it is important to ensure that the correct minimum curing periods have been observed for all substrates:-

Concrete – 6 weeks

Screed (non modified) – 3 weeks

Rendering (non modified) – 2 weeks

Gypsum Plastering – 4 weeks

Brickwork/Blockwork – 6 weeks

Accuracy of the substrate must be checked to ensure that the guidance given in BS5385 has been achieved i.e. "local variations in level for a nominally flat floor or wall should be such that, when checked with a 2m straightedge, any gap under the straightedge between points of contact does not exceed 3mm"

Design/Layout

Consideration to locations of plane changes and room sizes should be undertaken to ensure the best tile size is selected to minimise cutting and improve aesthetics.

Movement Joints

The location, type and scope of all movement joints must be ascertained prior to any fixing works. All structural joints must be followed through to the face of the tile at full width with intermediate movement joints (minimum 6mm wide) being situated at:-

Changes of plane

Wall/floor junctions

Where tiling abuts other materials

Additionally at 3 to 4.5m maximum centres for wall tiling and 8 to 10m maximum bay centres for floor tiling (in suspended floors the bay dimensions should be reduced by providing additional joints over supporting walls and beams).

Movement joints can either be filled with a suitable backer, bond breaker and filler (e.g. epoxy polysulphide – please check with manufacturer for suitability) or be of the pre-formed variety.

Adhesives

Adhesives should be in accordance with BS EN 12004, Class C2*. Particular adhesive choice will be governed by the substrate.

** Check with adhesive manufacturer for additional C1 product suitability.*

Johnson Tiles recommend the use of Johnson's Professional adhesives and grouts, see below:

| Substrate | Johnson's Professional Adhesive |
|---------------------|---|
| Concrete | Rapid Set/Rapidset Flexible |
| Sand/Cement Screed | Rapid Set/Rapidset Flexible |
| Wood Floors | Speedflex Overlay with minimum 12mm WBP/marine ply and prime joints with Johnson Professional Prime & Seal |
| Brickwork/Blockwork | One Part Flexible |
| Sand/Cement Render | One Part Flexible |
| Plasterboard | One Part Flexible Prime with Johnson Professional Prime & Seal |

Grouts

The choice of grout type should reflect the expected service conditions of the installation.

For general floor tiling grouts should be class CG2 ie Johnson Professional Wide Joint Flexible Grout.

For floors subject to frequent wetting ie showers and pool halls grout should be class CG2 for hard water areas or RG1 for soft water areas ie Johnson Professional Wide Joint Flexible Grout (CG2), Easy Clean Epoxy (RG1).

Where hygiene is important ie commercial kitchens and hospitals grout should be class RG1 ie Johnson Professional Easy Clean Epoxy.

For specific adhesive or grout advice please contact Johnson Professional helpline 0870 609 2851

Fixing Tiles

All floor tiles should be fixed with a solid bed of adhesive, this ensures maximum durability and strength within the installation and long term adhesion performance. This is achieved with the use of a notched solid bed trowel. It is good practice to periodically remove a recently fixed tile to ensure that the correct bedding is being achieved and maintained. When fixing all tiles care must be taken to ensure that no lipping of tiles occurs. All tiles within this brochure are recommended to be fixed with a nominal 3mm wide joint.

cleaning - floors

Maintaining the appearance and characteristics (especially slip resistance values) of floor tiles is achieved with the implementation of a suitable cleaning regime. It must be stressed that the cleaning material manufacturers instructions must be followed at all times. Regular and correctly undertaken cleaning should maintain a floor product as close to its original state as possible. Incorrect or infrequent cleaning will adversely affect the properties of the flooring material and increase potential hazards. Generally the smoother the surface of the tile the easier it is to clean. However, it should be noted that textured products, required to give adequate slip resistance when wet, can be satisfactorily cleaned – the cleanability of a surface is more a function of the contaminant than the texture of the surface. It is therefore essential when selecting and specifying a floor finish that the use of the area and likely contaminants, safety, aesthetic and hygiene requirements are all taken into account at the specification stage.

Cleaning can be split into several categories, each of which is dependant upon installation type (ie wet barefoot areas, shopping malls, public toilets etc) and frequency of usage (ie high, medium or low traffic):-

Builders Clean

This should be undertaken prior to a floor being brought into service. The builders clean removes any residual film left over from the grouting operation and is a one off cleaning process. It is imperative that this is carried out as any grout residues left behind will act as a key for dirt resulting in the installation being difficult to clean.

Temporary sealers may be used to facilitate cleaning off after laying which can be removed with the use of alkaline detergents.

Cementitious Grouts

The use of a mild acid decementing solution followed by thorough rinsing will remove all but the most stubborn of cement residues.

Epoxide Grouts

It is essential that ALL residue be removed from the surface of the tiles during the grouting process and before the resin cures. Failure to achieve this will result in a very difficult and expensive process using gel-type epoxide removers.

Routine Cleaning

The regular use of detergents or other cleaning agents which are excessively acidic or alkaline could cause irreversible damage to the ceramic tile surface. Degreasing agents that contain wax, sodium silicate or other additives which leave sticky deposits and thus retain dirt should be avoided. Oil residues or build-ups of wax can be removed with a proprietary wax and polish remover.

Manual Cleaning

In normal conditions Kerastar tiles require little maintenance and are easily kept clean by sweeping and then mopping with warm water to which a neutral or nearly neutral detergent has been added. The cleaning solution should remain on the floor for 5 to 15 minutes (see manufacturers instructions) to allow it to penetrate and emulsify the dirt after which it should be removed by rinsing thoroughly with clean water. The rinsing process removes the dirt so the use of clean water is important.

Mechanical Cleaning

For larger floor areas or areas of textured tiles the use of a rotary scrubbing machine is recommended (machines should not be used at speeds in excess of 450rpm). The choice of brush type is very important. Union mix brushes are suitable for light washing and scrubbing, polypropylene brushes are suitable where dirt deposits are especially heavy. The cleaning solution should remain on the floor for 5 to 15 minutes (see manufacturers instructions) after which a secondary scrubbing action and clean mop or suction should be undertaken to remove the solution and dirt.

High Pressure Cleaning

Kerastar tiles seldom require the use of high pressure cleaning. Whilst the process will not damage the tiles care must be taken to avoid erosion of the grout. To minimise grout erosion ensure that the water beam is continually moved from side to side and not allowed to concentrate on the grouted joints. Water containing abrasives or steam cleaners should not be used on ceramic tiles.

Wet Areas

Wet barefoot areas may attract build-ups of body fats, soaps, oil residues and organic growth. To prevent these a mildly acidic cleaning agent used regularly is preferable. If build up has been allowed a preliminary deep clean with a proprietary cleaner is required followed by regular use of a mildly acidic cleaning agent solution.

Periodic Deep Cleaning

Occasionally foreign matter may cause surface marks that cannot be removed with the usual cleaning processes and materials. If the surface mark cannot be removed, other materials should be considered (it is advisable to experiment on a small inconspicuous area):-

Paint – Paint Remover

Organic Stains – Bleach or one off treatment with washing soda

Rust – Masonry Cleaner

Oil, Fat, Grease – Detergent or degreaser

Mould Growth – Household bleach or proprietary cleaner

Tea, Coffee, Ink – Household bleach or proprietary cleaner

Abrasive powders or cleaners should never be used on ceramic tiles.

dda - disability discrimination act

The Disability Discrimination Act 1995 (DDA) introduced new measures to prevent discrimination against disabled people. The Act was broadened in 2005 to form the current Disability Discrimination Act 2005.

The DDA requires accessible environments to be provided for disabled people, either in their place of work or for access to goods, services or facilities (public spaces). Those commissioning new buildings or adaptations to existing buildings must consider the implications of the DDA and their ability to provide buildings that do not discriminate against disabled people (physical or mental impairments).

When specifying ceramics there are 2 main areas of relevance within the DDA.

Colour Reflectance (Contrast)

The DDA gives guidance on good visual contrast for the visually impaired between various elements of a building by the use of Light Reflectance Values (LRV).

LRV is a general term for contrast and is measured as the proportion of useful light reflected by a coloured object, floor, wall or ceiling. LRV is measured on a scale of 0 to 100 where 0 is perfect black and 100 perfect white (in reality 0 and 100 are unobtainable colours). According to NCS Colour Centre in practical terms black is approx 6 and white approx 85. See pages 32 - 38 for values.

The current guidelines from Building Regulations Approved Document M on contrast are that a minimum difference of 30 LRV points should be specified for adjacent surfaces to ensure that visually impaired people are not discriminated against. In the specific example of ceramic tiles this difference should be between:

Floors to walls

Ceiling to walls

Handrails to walls

Sanitary fittings to walls

Visual contrast between floors and walls is important in enabling visually impaired people to assess and gauge the size and shape of a room. It is important that the greatest visual contrast occurs where the floor meets the wall (skirting) as this gives the most accurate visual indication of the extent of the room. Where provided, skirtings should contrast visually with the floor and be similar in colour and tone to the wall surface.

Tactile Foot Braille (*see Kerastar literature for details*)

Recommendations from the Department of the Environment, Transport and the Regions (DETR), the joint mobility unit of the RNIB and the Centre for Accessible Environments (CAE) led to the need for Tactiles to be used as warning features for stairs, ramps and platforms.

Available in 400x400x10mm format and in 2 colour options the Johnson Tactile System offers compliance with not only the DDA requirements but also the DETR, RNIB and CAE recommendations. Specified correctly the Johnson Tactile System will ensure that any new building Access Audits will be compliant with the Access to Goods and Services part of the DDA.

The Johnson Tactile System is manufactured to the highest technical and performance standards. The surface of the Tactile products have the enhanced performance qualities of a slip resistance durandum inclusion in the surface of the tile.

The Corduroy profile is designed to warn visually impaired people of the presence of specific hazards. Such a profile is "Foot Braille" and is a warning associated with steps, ramps or the approach to on-street light rapid transit platforms. The Corduroy profile is an internationally accepted Tactile surface that conveys the message of hazard and implies proceed with caution.

The Blister profile is designed to warn visually impaired people of the edge of all off-street platforms. The profile consists of a series of offset, flat topped dome studs. The parallel rows of studs are designed to be installed at right angles to the direction of traffic and are normally located behind the platform edge coping.

This information is not exhaustive and the requirements at the time of specification must be checked.

BS8300:2001 Amendment 1 indicates that there is anecdotal evidence to suggest that a 20 point LRV difference may be sufficient – especially where large adjacent areas are involved.

It must be noted that the guidance on LRV values given in this brochure is correct at the time of print. This is a subject that may be reviewed by the regulatory body at any time so it is advisable to check the guidelines at the time of specification of product.

The DDA details given in this brochure are to be used as an outline guide only and are the details as Johnson Tiles understand them at the time of print. If in doubt of any details contained herein the Act should be read in full.

general information



FM 26818



BS EN 14411
LIC No. 7325



ISO 14001
EMS 40817

Quality Standards

Decorative tiles are quality products conforming to the technical specification detailed in this brochure.

Environmental Management

Johnson Tiles, Harewood Street, Tunstall, Stoke on Trent has achieved ISO 14001 for Environmental Management Systems at its Stoke on Trent factory.



© Property of and used under license from Scandinavian Colour Institute AB, SCI Sweden.se, Stockholm, 2001. See your local NCS distributor for original NCS standard samples

Colour

Products are notated to the Natural Colour System (NCS).

Reference guides to other colour referencing systems are also given in this publication.

Fitness for Purpose

For specific suitability and fitness for purpose details contact the Technical Helpline or visit the website: www.johnson-ceramics.com

Tile Sizes

All tile sizes in this brochure are nominal metric modular and include a nominal 3mm joint.

Important

During the course of manufacture of all ceramic tiles some variation in shade or pattern can occur. Before fixing tiles several cartons should be opened and the contents mixed to ensure that the size, shade, colour and patterning are acceptable.

Johnson Tiles cannot accept responsibility for any tiles that have been fixed.

Nothing in these statements does or will affect the statutory rights of the consumer.

Samples Tel: 01782 524064

Fax: 01782 524138

Email: techsales@johnson-tiles.com

Technical Helpline Tel: 0845 210 3000

Fax: 01782 524138

Email: techadvice@johnson-tiles.com

International Technical Helpline:

+44 (0) 1782 524067

www.johnson-ceramics.com

Johnson Tiles recommend the use of adhesives and grouts from the Johnson Professional range. For further information and a detailed fixing specification please contact 0870 609 2851.

The colours shown on the tile products in this brochure are as accurate as the limitations of the printing process will allow. Please refer to actual product samples before purchasing.

Every effort has been made to ensure the accuracy of the information given in this literature. In the interests of progress, however, Johnson Tiles reserve the right to change specifications and availability without prior notice.

technical helpline:

0845 210 3000

JOHNSON

Johnson Tiles Limited, Harewood Street,
Tunstall, Stoke on Trent ST6 5JZ.

T: **01782 575575** F: 01782 577377

www.johnson-ceramics.com

MATERIAL LAB

10 Great Titchfield Street, London W1W 8BB

T: **020 7436 8629** F: 020 7436 9031

E: info@material-lab.co.uk www.material-lab.co.uk

Middle East Office, Johnson Tiles, PO Box 50518, Dubai, United Arab Emirates.
Tel ++97 14 398 6004 Fax ++97 14 398 7066

Johnson Tiles (Pty) Ltd, Olifantsfontein, South Africa.

Johnson Tile (Pty) Ltd, Bayswater, Victoria, Australia.

Philkeram Johnson s.a., Thessaloniki, Greece.

Johnson Tiles is a division of Norcros Group (Holdings) Ltd,
Ladyfield House, Station Road, Wilmslow, Cheshire, SK9 1BU.
Registered in England under number 566694.

© Johnson Tiles, Johnson and Material Lab are registered trade marks and
together with all product names are the trade marks of H & R Johnson Tiles Ltd
and licensed to Norcros Group (Holdings) Ltd trading as Johnson Tiles.

Printed in England 2008